



Underwater Mapping

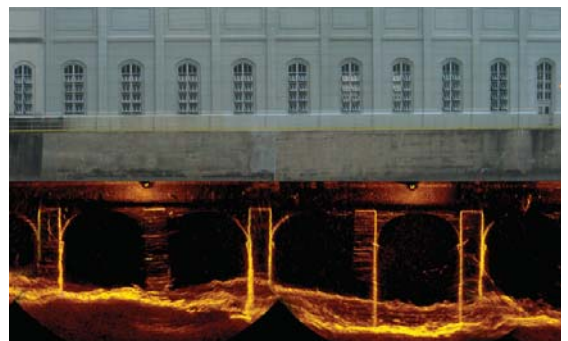
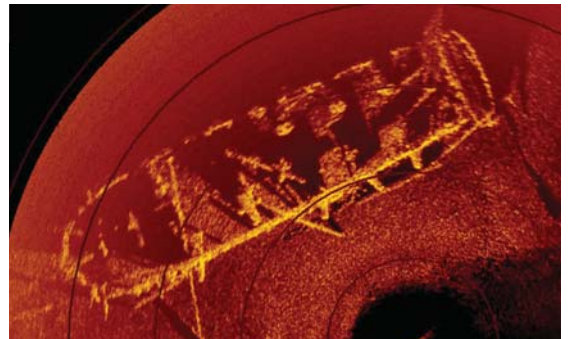
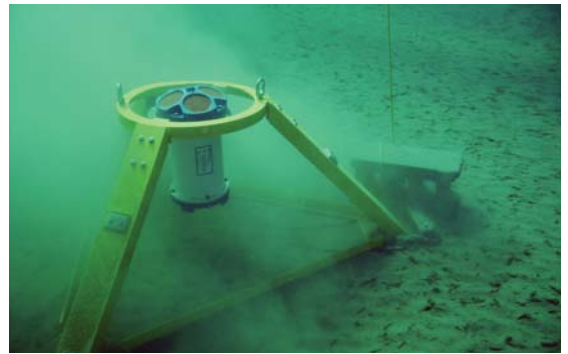
Marine Geophysical and Hydrographic Surveys

Aquatic Sciences provides a complete range of hydrographic, geophysical and visual inspection techniques to conduct underwater investigations. Submerged surface features and targets are located, measured and mapped with precision accuracy in real-time using a combination of geophysical mapping and charting technology.

In-house cartographers and graphic specialists produce quality technical reports (hardcopy and GIS compatible formats) utilizing geophysical data.

ASLP's survey vessels are trailerable and equipped with a wide variety of survey equipment packages. In addition to surface vessels, ASLP owns and operates a fleet of purpose-built remotely operated vehicles (ROV's) to deploy sonar and video imaging in open water, tunnels and pipelines.

Technical advances in geophysical survey instrumentation and methodologies provide greater efficiency and accuracy in mapping rivers, estuaries, channels, lakes or harbour bottom surfaces.



www.aquaticsciences.com

40 Centre Drive
Quaker Centre Business Park
Orchard Park, NY, 14127

Tel: (716) 667-3507 Fax: (716) 667-0350

